

APPENDIX A.1

INFORMATION DAY - NEWSPAPER NOTICE

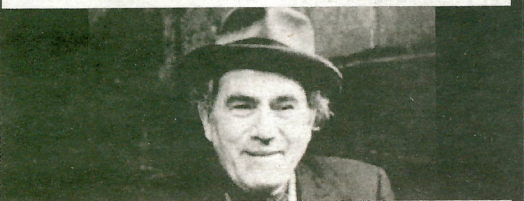
ESB Wind Development
Public
Information Day
on proposed
Grousemount Wind Farm,
Co. Kerry
in
Kilgarvan Community
Centre, Kilgarvan,
Co. Kerry
on
Tuesday 21st April 2015
From 3:00pm to 7:30pm.

For further information please contact:
Gerard Keenaghan at
gerard.keenaghan@esb.ie
or (01) 7027997

ESB Wind Development Ltd. will be hosting a Public Information Day at Kilgarvan Community Centre, Kilgarvan, Co. Kerry on Tuesday 21st April between the hours of 3.00pm and 7.30pm. Members of the public are invited to attend, where information will be available regarding the proposed wind farm in the townlands of Ballagh, Barnastooka, Coolnagoppoge, Coolknoohil, Gortlahard, Grousemount and Knockanruddig, Co. Kerry. ESB International is preparing the Environmental Impact Statement as well as the planning application for the proposal. Representatives from ESB Wind Development Ltd. will be present to provide information and answer any queries regarding the proposed wind farm.

PUBLIC NOTICES

COMHAIRLE CONTAE CHIARRAÍ
KERRY COUNTY COUNCIL



EAMON KELLY
Sparánachtaí Ealaíon 2015
Arts Bursary 2015

Applications are open to Artists and Arts Students, including Leaving Certificate Students. Applications must reside in or be native of the Killarney Municipal District and demonstrate strong artistic potential. Closing Date Friday 15th May 2015

Application forms available from:
Arts Office,
Kerry County Council,
Rathass, Tralee,
County Kerry. Email: arts@kerrycoco.ie

ESB Wind Development Public Information Day on proposed Grousemount Wind Farm, Co. Kerry

in
Kilgarvan Community
Centre, Kilgarvan,
Co. Kerry

on
Tuesday 21st April 2015
From 3:00pm to 7:30pm.

For further information please contact:
Gerard Keenaghan at
gerard.keenaghan@esb.ie
or (01) 7027997

ESB Wind Development Ltd. will be hosting a Public Information Day at Kilgarvan Community Centre, Kilgarvan, Co. Kerry on Tuesday 21st April between the hours of 3.00pm and 7.30pm. Members of the public are invited to attend, where information will be available regarding the proposed wind farm in the townlands of Ballagh, Barnastooka, Coolnagoppoge, Coolknoohil, Gortlahard, Grousemount and Knockanruidig, Co. Kerry. ESB International is preparing the Environmental Impact Statement as well as the planning application for the proposal. Representatives from ESB Wind Development Ltd. will be present to provide information and answer any queries regarding the proposed wind farm.



Amy O'Connor with her family at the fundraising 'Quiz Night in aid of Amy' at the Na Gaeil clubhouse on Thursday last 1-r: Sharon and Amy O'Connor with John O'Connell.



Pobalscoil Chorca Dhuibhne players celebrating the winning of the Hogan Cup in Dingle on Saturday night.



SCENIC CHALLENGE: Kerry Crusader cycle club pictured outside Listowel community centre on Sunday morning before heading off on the Orbis scenic challenge cycle on Sunday morning last.



LAUNCHED: Rene Dooley, Aime Downing, Finola White, Danielle Favier and Siobhain Naughton attending the official launch on Friday of "The Shire" pub, a Lord of the Rings themed pub located at Michael Collins Place, Killarney.



BRAVING THE ELEMENTS: Brian Carey, Paddy Griffin and Adrian O'Leary, who took part in The Kerry Crusader cycle club Orbis Scenic Challenge on Sunday morning last in Listowel.



CHAMPIONS: The BOS school of dancing got a heroes welcome in the Square, Kenmare on Monday evening after returning home from Dusseldoff, Germany as European and World Dance Champions pictured here with their teacher Bernie O'Sullivan (right).